

*City of Mayfield Heights*

# COMMUNITY + AQUATIC CENTER



alm HIGLEY

levelHEADS

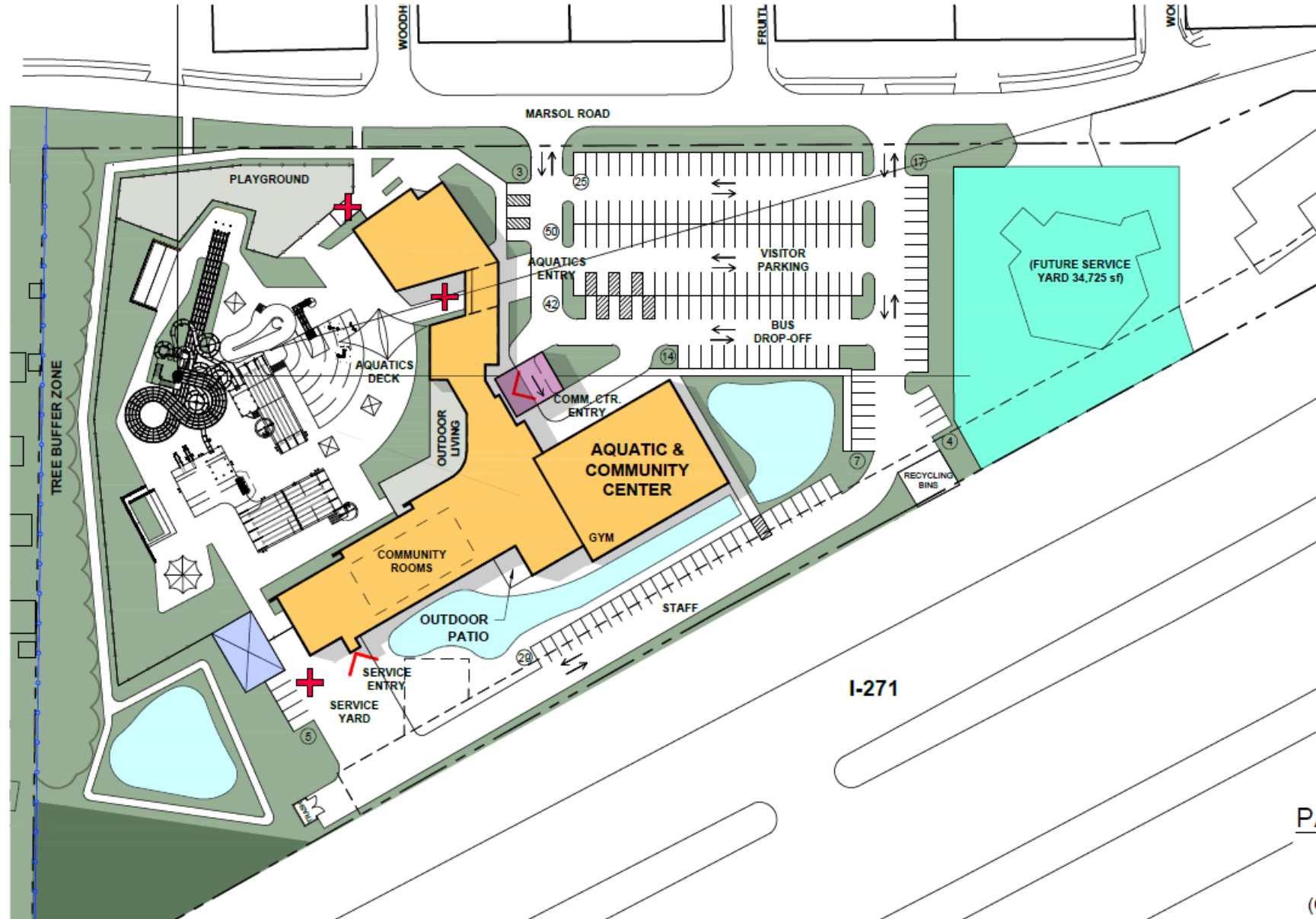
LEGAT



## **VISION**

- **Create an Award-Winning Facility**
- **“We have one time to get this project right”**
- **Maximize Aquatics SF**
- **Maximizing Pool Deck**
- **Maximize Playground SF**
- **Bring back the Giant Slide**
- **Maximize the flexibility of Community rooms**

SITE PLAN



**LEGEND:**

- 8 PARKING SPACE COUNT
- T TRASH ENCLOSURE
- FUTURE SERVICE CENTER
- NEW AQUATIC & COMMUNITY CENTER  
36,527 GSF
- DROP-OFF CANOPY  
1,440 SF (DETACHED)
- POTENTIAL MAINTENANCE BUILDING (REFER TO DWG 5/6)
- ^ ENTRANCE
- + AMBULANCE / RESPONDER ACCESS LOCATION
- 6 FT ALUMINUM PICKET FENCE
- 6 FT HIGH SOLID VINYL PRIVACY FENCE
- POTENTIAL RETENTION BASIN

\*Design will follow Mayfield Heights commercial corridor design manual.  
 \*This drawing is conceptual and is not intended to represent a final solution. Zoning review, site survey, sub surface investigation and other due diligence will be required to validate building sizes, parking counts and site retention.

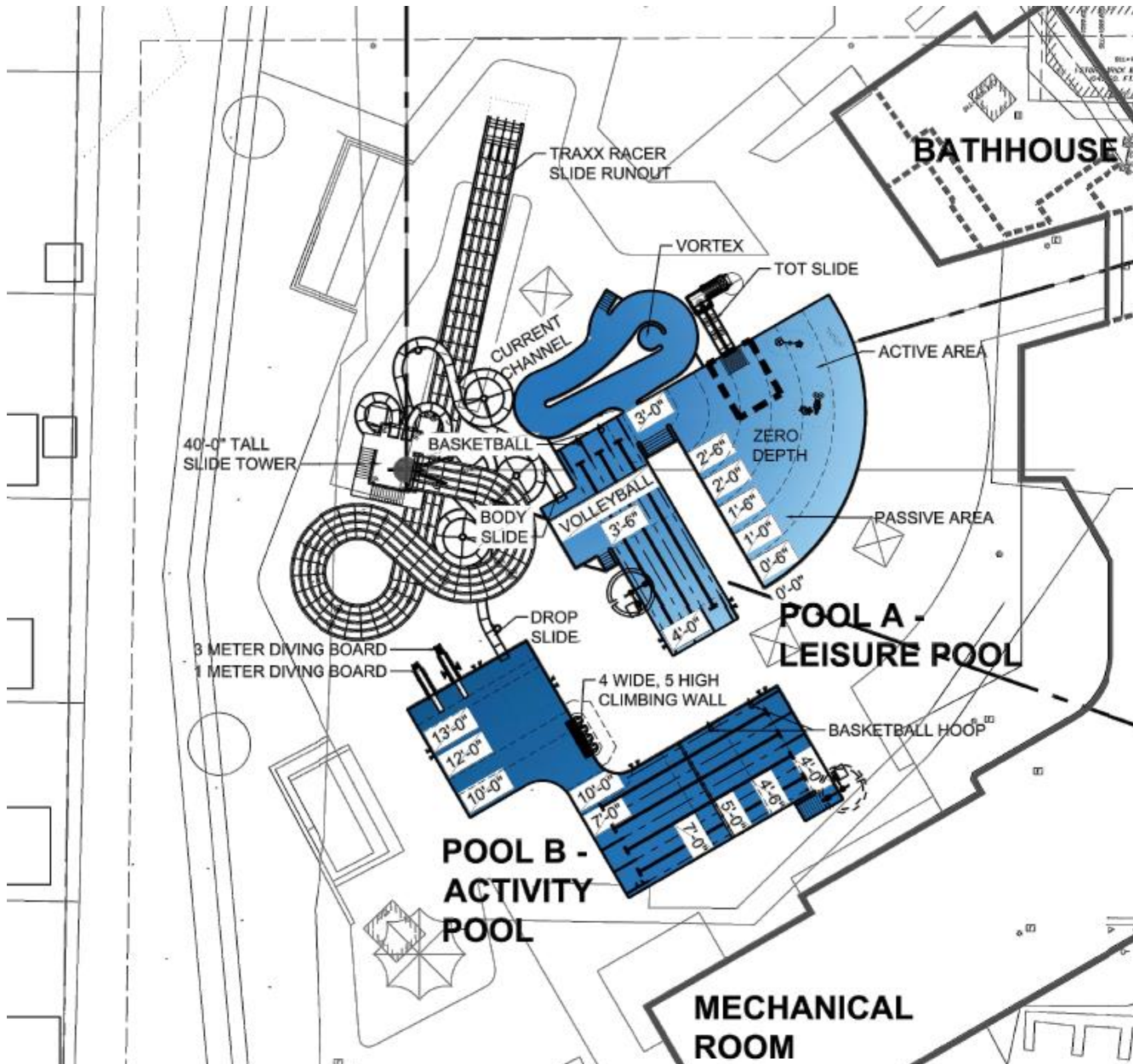
**PARKING COUNT:**

REG. = 185 spaces  
 HCAP. = 11 spaces  
 TOTAL = 196 spaces  
 (Original RFQ = 183 spaces)



Scale: 1" = 80'-0"

## AQUATIC DECK



- **40' Giant Slide – 6 Flumes**
- **Current Channel**
- **Vortex**
- **Zero Depth Pool**
- **Activity/Passive Areas**
- **3-Lane Leisure pool**
- **4-Lane Activity Pool**
- **Diving Boards (1/3 mtr)**
- **Family (Tot) Slide**
- **Climbing Wall**
- **Volleyball/Basketball**

## FLOOR PLAN

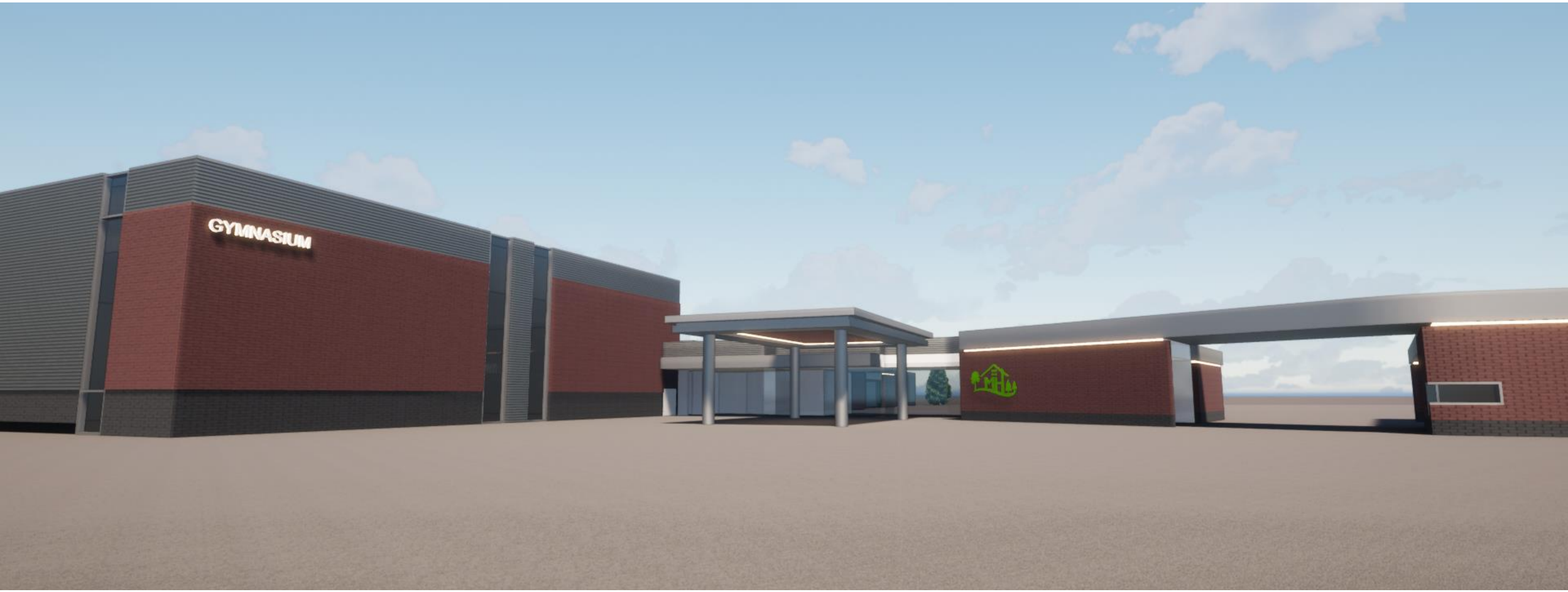
- Recreation Department
- Gymnasium
- Community Rooms
- Multi-Purpose Room
- Senior Fitness
- Outdoor Exercise Area (Future)
- Outdoor Living Room



FIRST LEVEL - 36,527 FLOOR AREA GROSS

SCALE - 1:40

PERSPECTIVES



**PERSPECTIVES**

